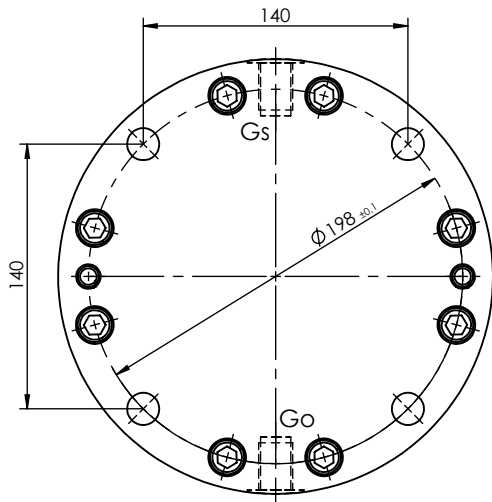


Compact-Rotator Type 605H-1



Variante of design 1:

Stator with centering diameter/spigot $\varnothing 90$ mm
(Through removal of slice 2.605.09 can change in Variante of design 2 at sheet 4.605.02)

Machine:

e.g. hydraulic excavators-service weight:
max. 10,0 ts with floating attachment
max. 6,0 ts with rigid attachment

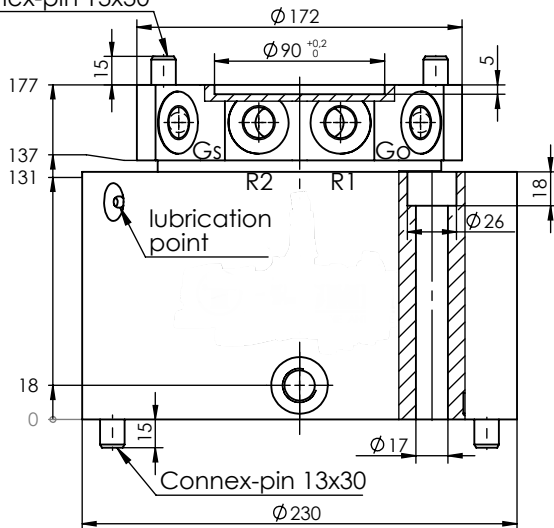
Add-on units:

Clamshell buckets of max. 0,6 m³
Grapples of max. 0,25 m³
Grabs for demolition and sorting
of max. 0,3 ts dead load
Special devices on request.

Technical details:

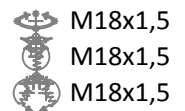
max. thrust load:	= 50 kN
max. radial load:	= 34 kN
p max. grab	= 35 MPa/350bar
p max. rotating engine	= 25 MPa/250bar
max. torque	= 1250 Nm
Torque /100bar	= 500 Nm
Adsorption volume	= 350 cm ³ /R
min. oil passage Gs / Go	= NW 10
Mass	= 40 kg
max. rotations	= 30 rpm
Bending moment Mb per.	= 10 kNm
	(leaf 4.605.00)

Connex-pin 13x30



Connections:

R1,R2: rotator rotate
Go: open grab
Gs: close grab

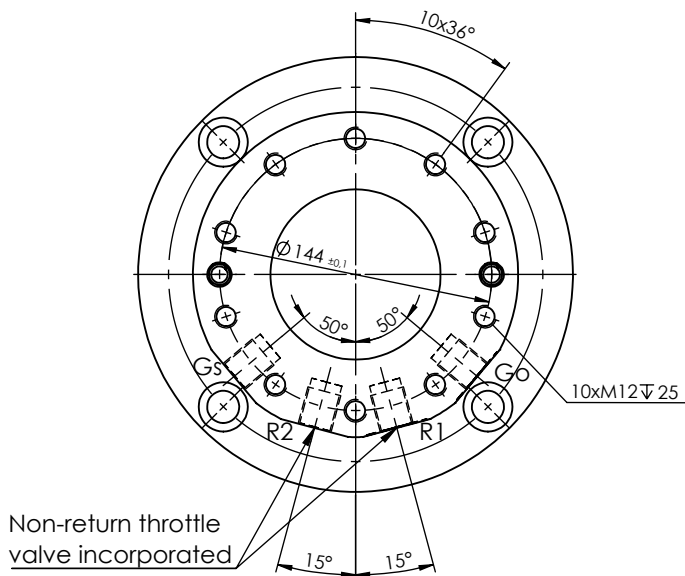


Volume of delivery:

4 Connex-pin SG 13x30 Article no.: 1.04.074

Special accessories:

at desire with grab shock valves
delivered - refer 4.605.04



Non-return throttle
valve incorporated